

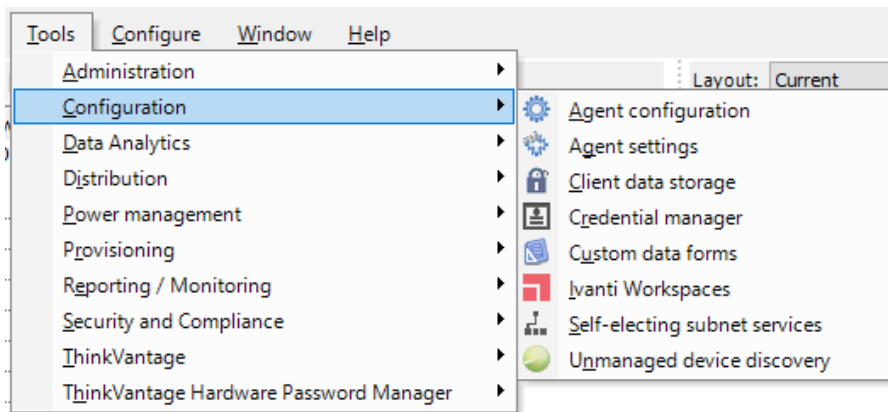
Windows 10 Migration Accelerator

Endpoint Manager Configuration Guide

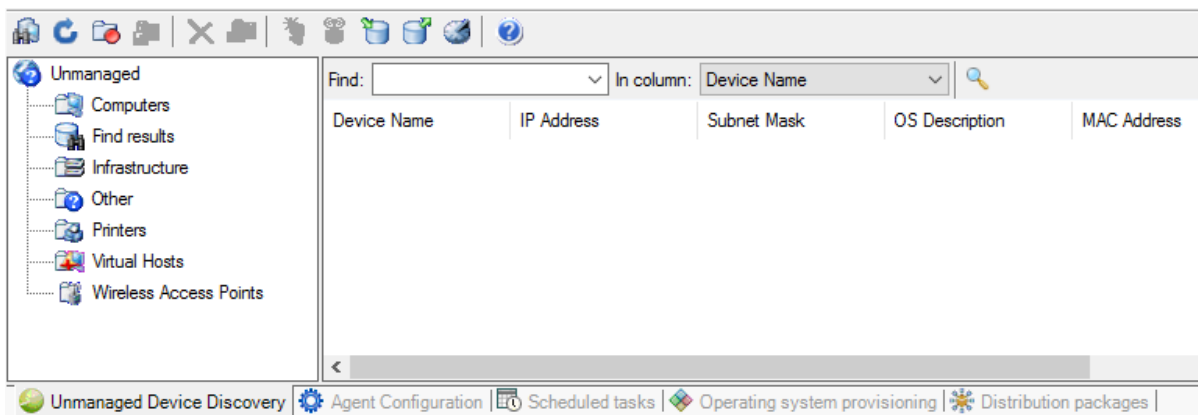
Components

Machine Discovery

1. To configure machine discovery, click **Tools > Configuration > Unmanaged device discovery**.

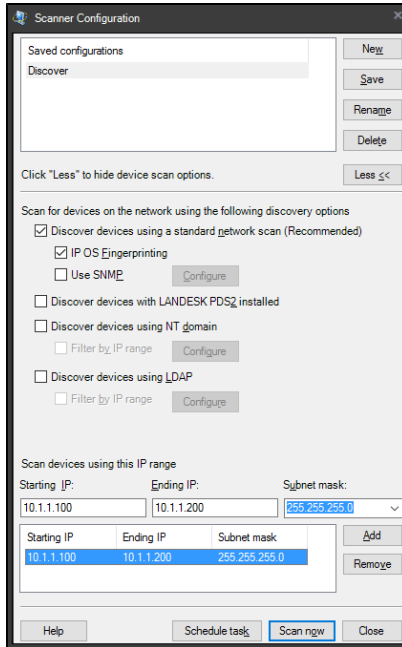


2. On the **UnManaged device discovery** tab, click the first icon:



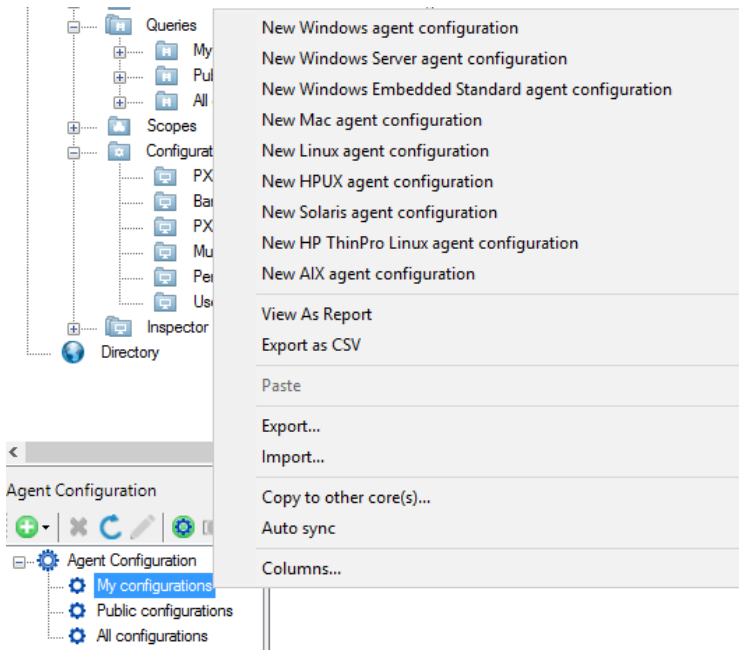
Create a new discovery configuration. This screen shows and IP address range from 10.1.1.100 to 10.1.1.200 for example but other methods are supported such as LDAP query.

3. To start the discovery from this interface select **Scan now** or to configure it to run on a schedule select **Schedule task**.



EPM Agent Deployment

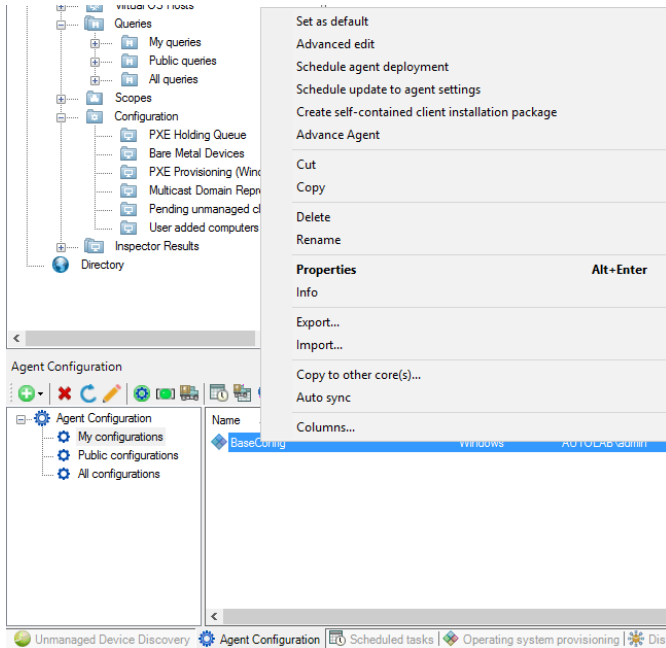
1. Click **Tools > Configuration > Agent Configuration**.
2. On the Agent Configuration tab, right-click **My configurations** and choose **New Windows agent configuration**.



3. Name the configuration and click **Save**.

Add any supporting settings if prompted.

4. The agent has not yet been created on the disk. Right-click the newly created agent configuration and select **Advance Agent**.

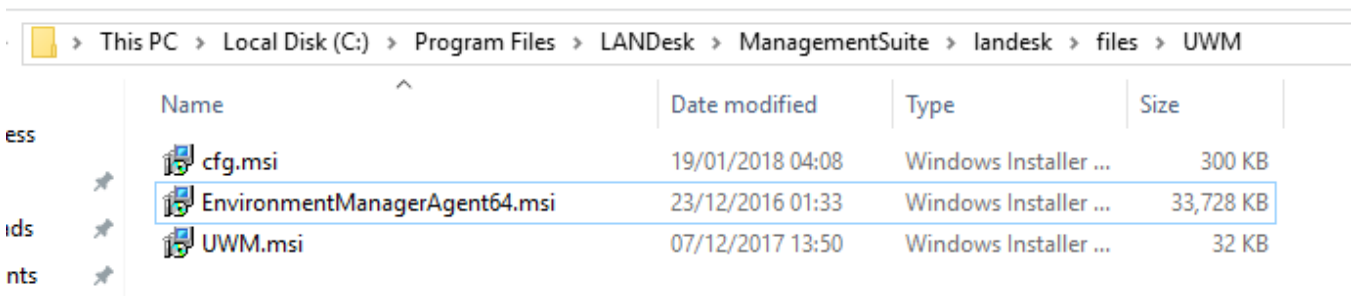


5. From the same context menu, choose **Schedule agent deployment**.

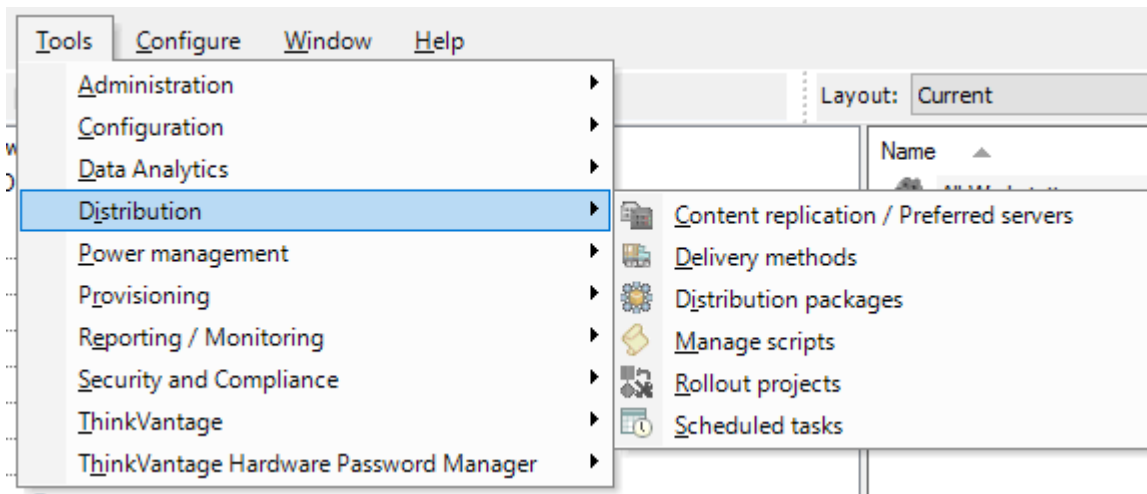
The agent is now scheduled but the schedule has no target machines. The scheduled task will have machines added to it when instructed to do so from the Xtraction dashboard.

Create a Deployment Bundle for UWM Environment Manager

1. Create a new folder in C:\Program Files\LANDesk\ManagementSuite\landesk\files to contain the agent, config and license MSI files.
2. Copy the agent, config and license MSI files into this location.

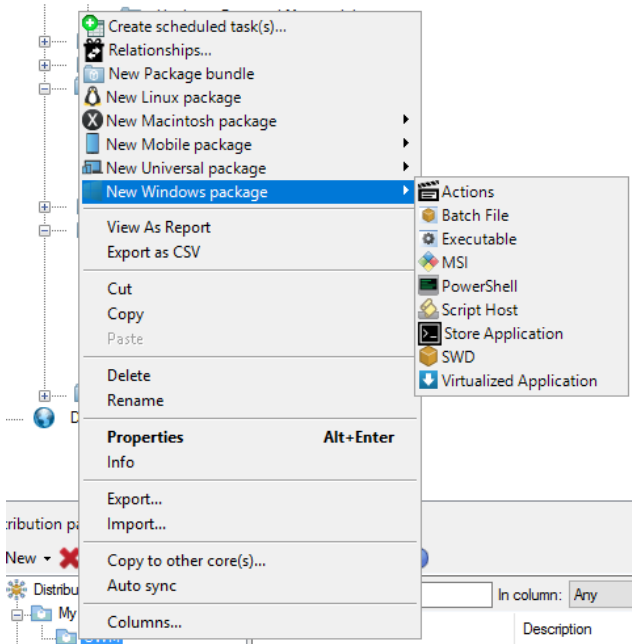


3. Click **Tools > Distribution > Distribution packages**.

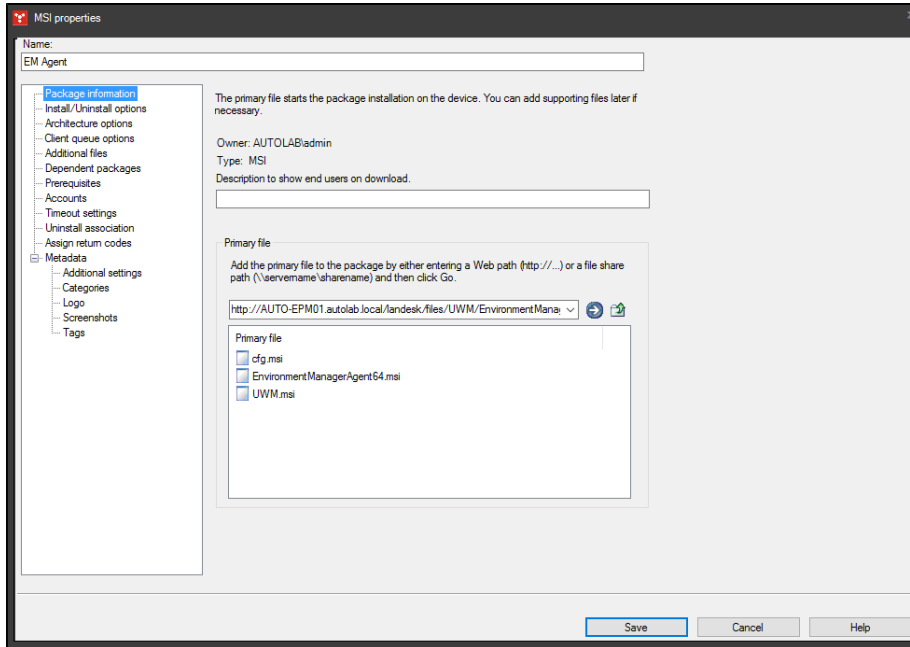


4. On the Distribution Packages tab, right click **My packages** and choose **New Package Bundle** and name it.

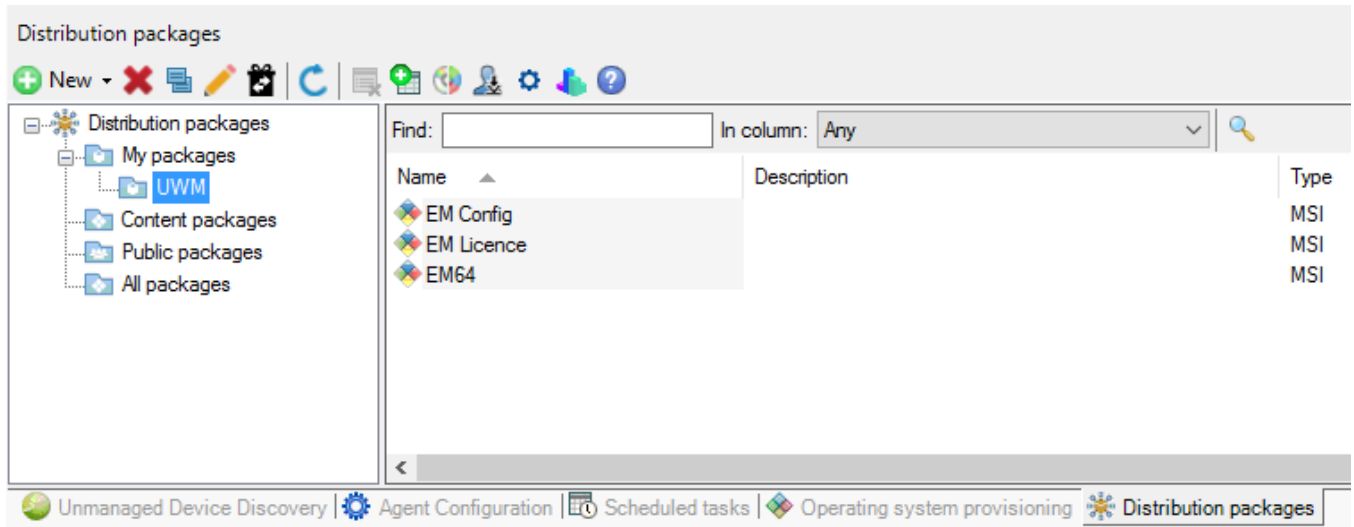
5. Right-click inside the new Bundle folder and choose **MSI**.



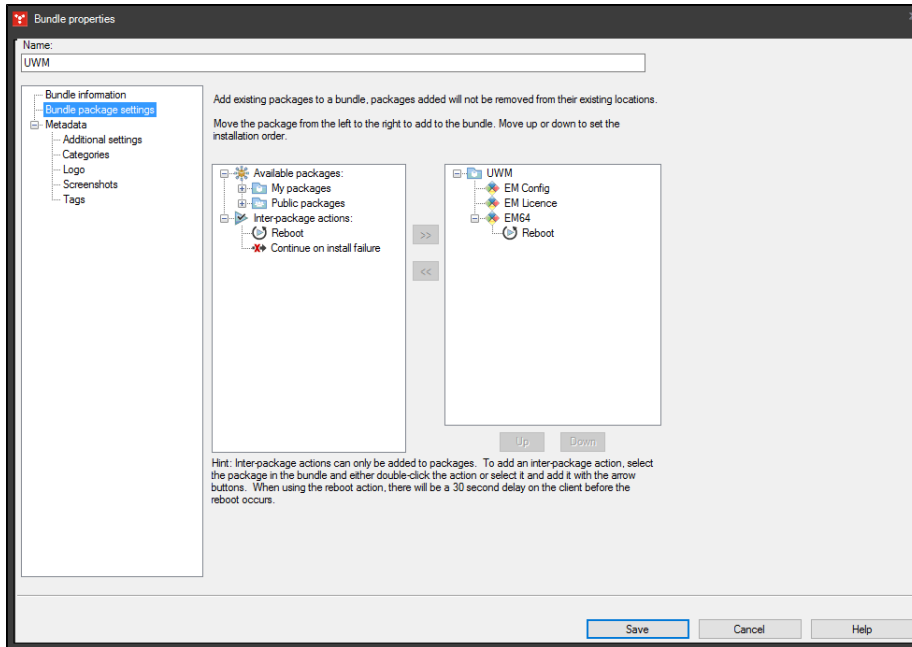
6. Name the package and navigate to the first MSI file. Specify the correct architecture if it is the agent and deploying in a mixed architecture environment.



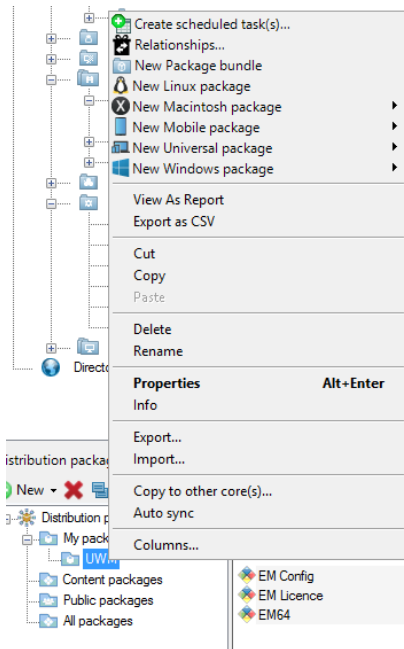
7. Repeat this process for all packages, so that an agent, config and license package are present.



8. Double click the bundle folder and order as shown.



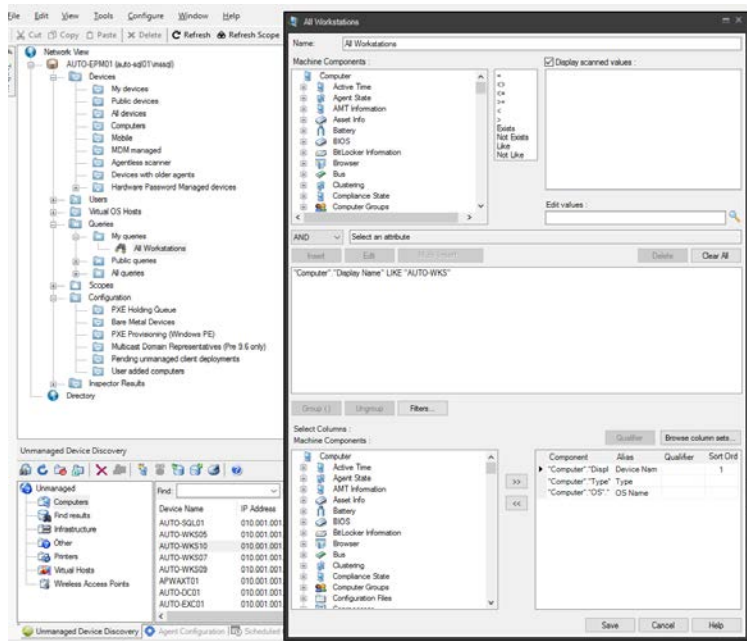
9. To create a schedule for this bundle right-click it and choosing **Create scheduled task(s)...**



The scheduled task is now complete but has no target machines. We will populate the schedule using a query.

10. To create the query, in the Network View, right-click **Queries > My queries > New Query**. In this example we are selecting all machines beginning "AUTO-WKS".

11. Name the query and click **Save**.



Any machines that have the EPM agent deployed, which check in and see that there is a policy for them to download and install the bundle.

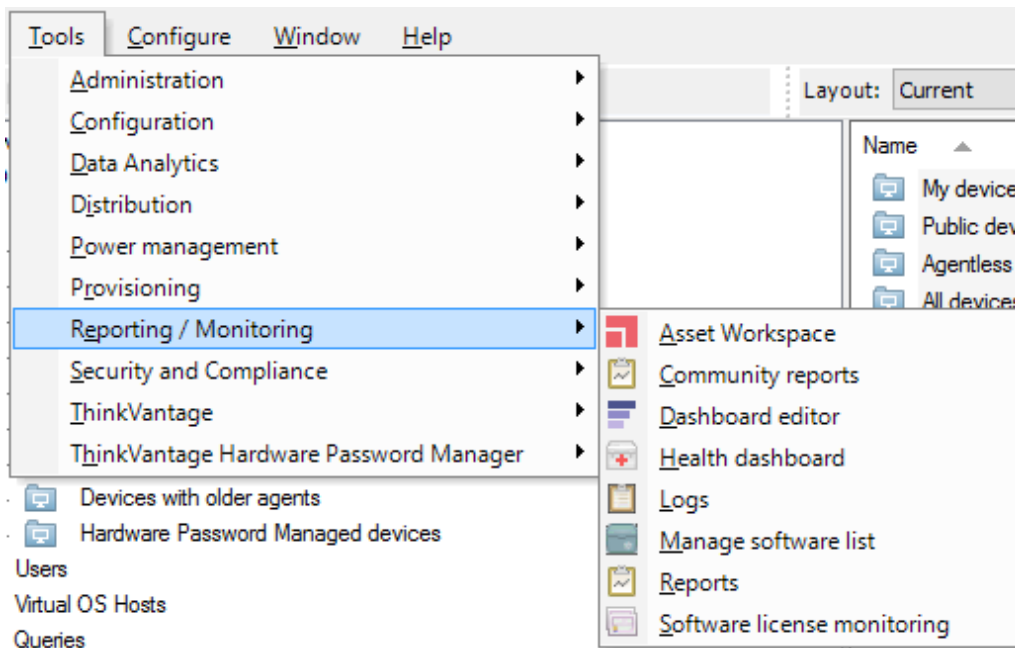
Check for migration readiness

Before EPM overwrites the target machine's disk with a new image, User Data, Windows settings and Application settings need to be captured.

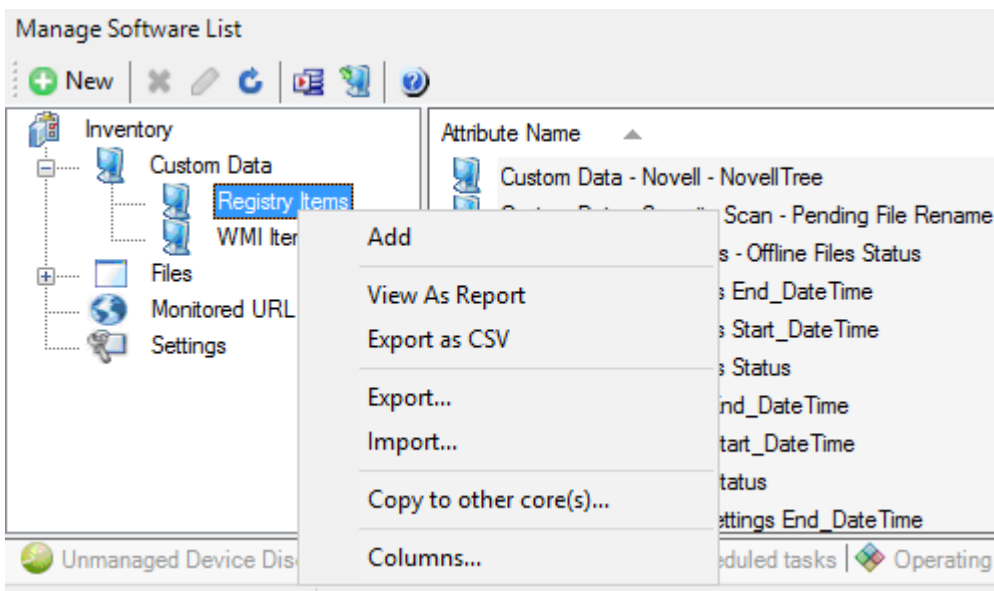
The supplied Environment Manager configuration writes registry flags to the local endpoint, indicating progress status, start and end times for User Data, Windows Settings and Application Settings capture. These flags are, in turn, captured by EPM and used to control if the migration can proceed or not.

EPM must be instructed to capture these flags as a custom capture.










1. Click **Reporting / Monitoring > Manage software list**.



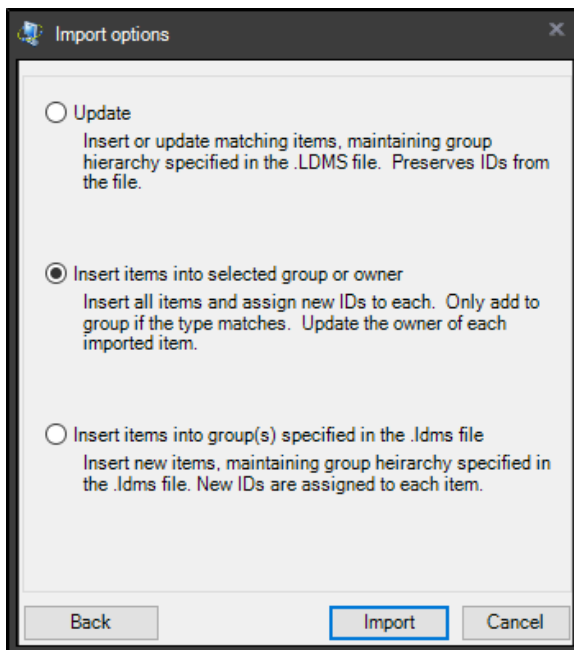
2. Right click **Registry Items** and choose **Import**.

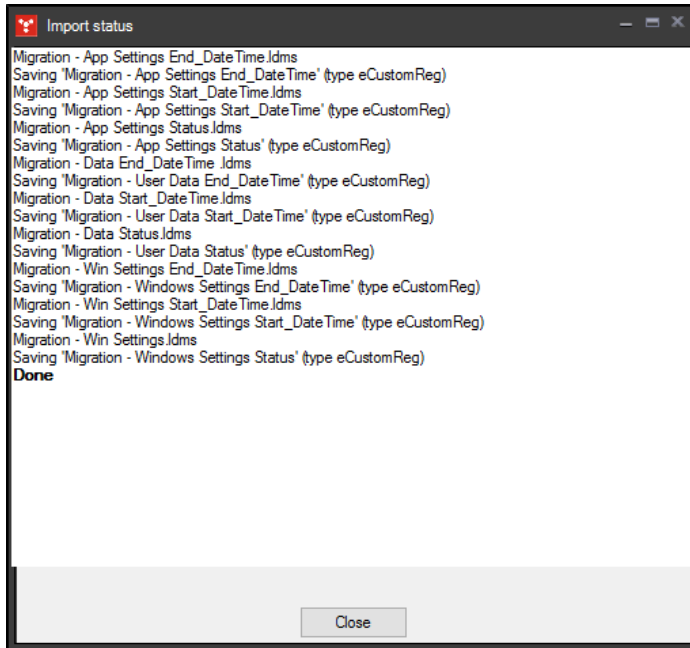


3. Multi-select the six supplied .ldms files.

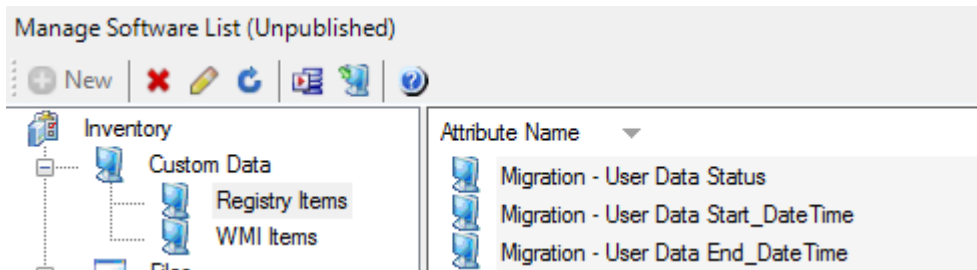
-  Migration - App Settings End_DateTime.ldms
-  Migration - App Settings Start_DateTime.ldms
-  Migration - App Settings Status.ldms
-  Migration - Data End_DateTime .ldms
-  Migration - Data Start_DateTime.ldms
-  Migration - Data Status.ldms
-  Migration - Win Settings End_DateTime.ldms
-  Migration - Win Settings Start_DateTime.ldms
-  Migration - Win Settings.ldms

4. Click **open**, followed by **Import**, using the middle radio button.



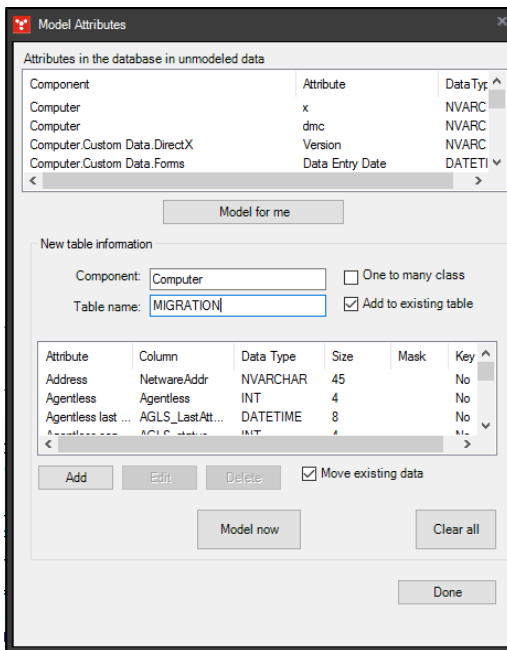


5. Click **Close** and click the **Model Attributes** button:

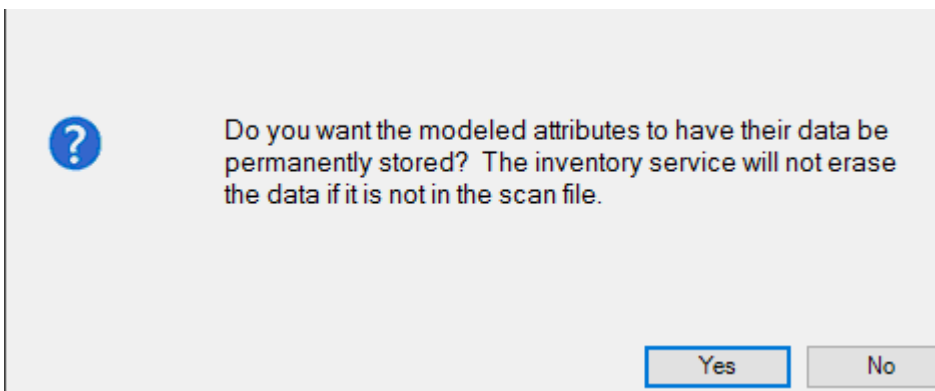


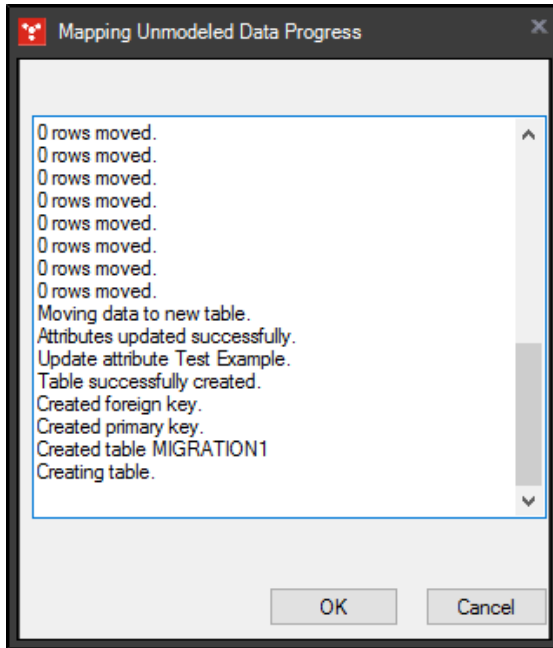
6. Highlight the newly added 'Migration -' items and click **Model for me**.

7. Type **MIGRATION** for table name, this name will be referenced in Xtraction queries later on.



8. Click **Model now**, followed by **Done**.

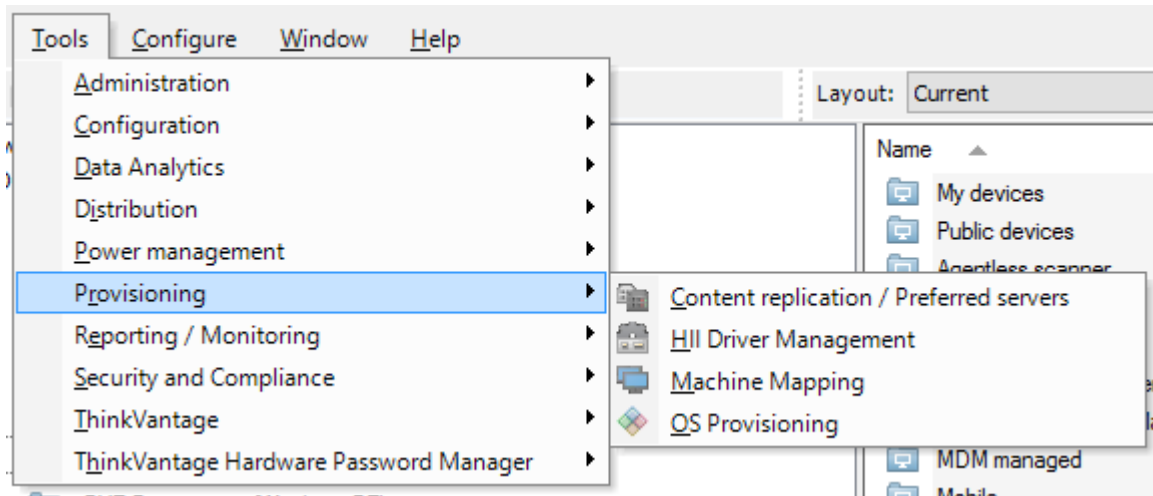




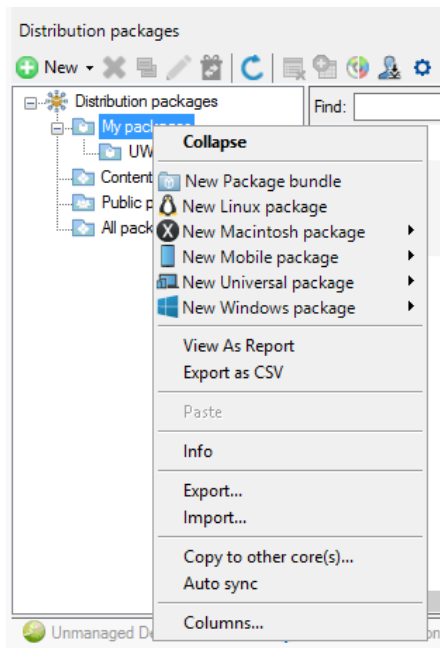
EPM will now capture these values during inventory scans.

Create OS provisioning job

1. Click **Tools > Provisioning > OS Provisioning**



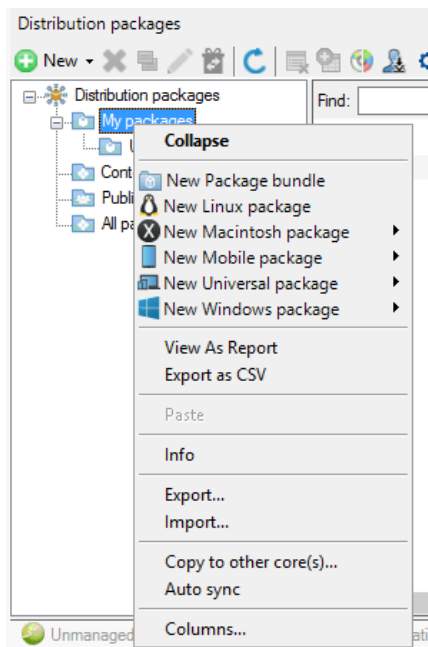
- In the OS Provisioning Tab, right-click **My Packages** and choose **Import**.



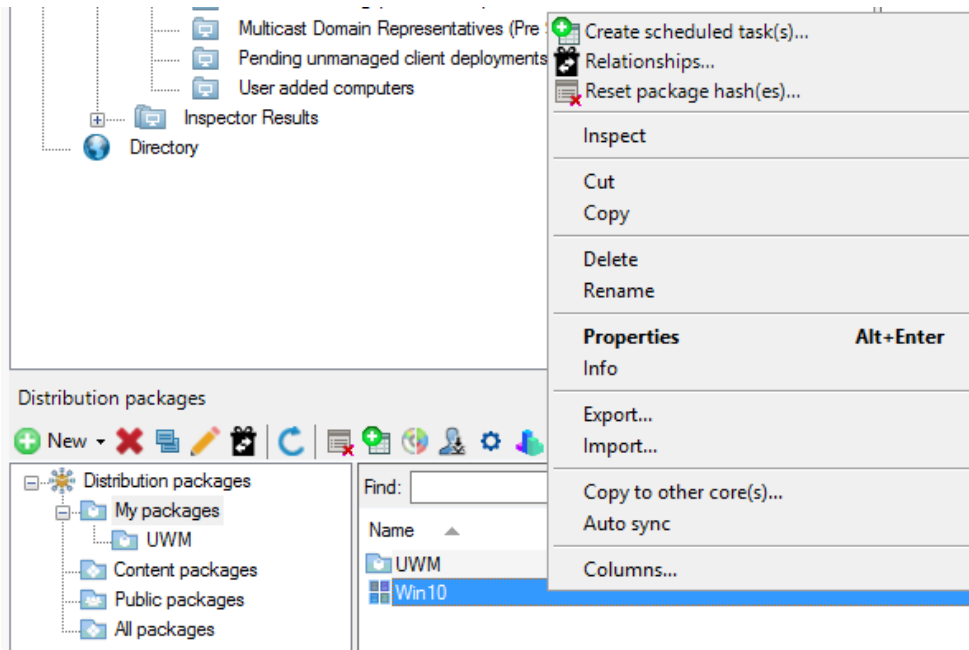
- Select Win10_OS.xtp

OS provisioning jobs cannot be directly started from Xtraction due to limitations in the MBSDK, so you must create a Universal Provisioning group and add the OS template there. This is done for you in one of the exported templates.

- Click the **Distribution Packages** tab and right-click **My packages**. Click **Import** and choose **Win10.Idms**



5. Finally, right-click the newly created package and select **Create Scheduled task(s)**.



Further Help and Information

Information about installing, configuring, and using Endpoint Manager can be found [here](#).